

**MAPLE ROAD**

## MAPLE ROAD

Over 7 miles long, Maple Road (C.R. 192) is a significant east-west arterial highway traversing the width of the Town. Maple Road begins at Niagara Falls Boulevard and is considered a Commercial Corridor to Millersport Highway. Between Millersport Highway and Transit Road, Maple Road is a Suburban Corridor, featuring some institutions, a variety of residential forms of development and commercial nodes at various intersections.

Element	Niagara Falls Blvd to Millersport Hwy	Millersport Hwy to Hopkins Road	Hopkins Road to Transit Road
Cross Section	W+S+T+T+M+T+T+S+W	W+T+T+M+T+T+W	W+T+T+M+T+T+W
ROW width (ft)	100	80 - 100	80 - 100
On-street parking	no	no	no
Sidewalks	yes	yes	yes
Bike lanes	no	no	no
Shoulder	yes, wide	no	no
Posted speed (MPH)	45	45	45
Town classification	minor arterial	minor arterial	minor arterial
MPO classification	principal arterial	principal arterial	principal arterial
Character classification	commercial	suburban	suburban
Daily Traffic Count	17,900 - 26,100	25,000	23,600
Year of traffic count	2002	2003	2002
Pavement condition, 2003	6-9	5	5

Cross Section Key: W - Sidewalk, S - Shoulder, T - Travel, M - Median Lane - Center Turn Lane

Within the Commercial Corridor land use is primarily retail. Access management tools that could be implemented include: relocation/removal of driveways within the functional area of intersections, restricting turning movements to/from driveways, driveway consolidation and increasing access between parcels.

Within the Suburban Corridor, access management tools that could be implemented include: removal of driveways within the functional area of intersections, restricting turning movements to/from driveways, constructing traffic calming measures such as curb extensions, parking lanes, and lane width reduction.

**Maple Road, between Niagara Falls Boulevard and Millersport Highway, is currently under design for rehabilitation and reconstruction. The Town should work closely with the County to implement the recommended access management measures to the fullest extent possible.**

The following five sheets identify access management recommendations for Maple Road.



Five-lane section within the Commercial Corridor (between Niagara Falls Blvd. and Millersport Highway).



Suburban (residential) character, typical of the corridor between N. Forest Road and Hopkins Road.



Maple Road east of Old Lyme Road. The existing driveway configuration and drive-thru traffic associated with the business (left photo) coupled with the school traffic across the street (not shown) makes this a difficult intersection to navigate safely. Medians and driveway restrictions could be employed. Future site plan approvals should require additional improvements to internal circulation. Shared access and parking between this business and the adjacent property (right photo) would also improve access.








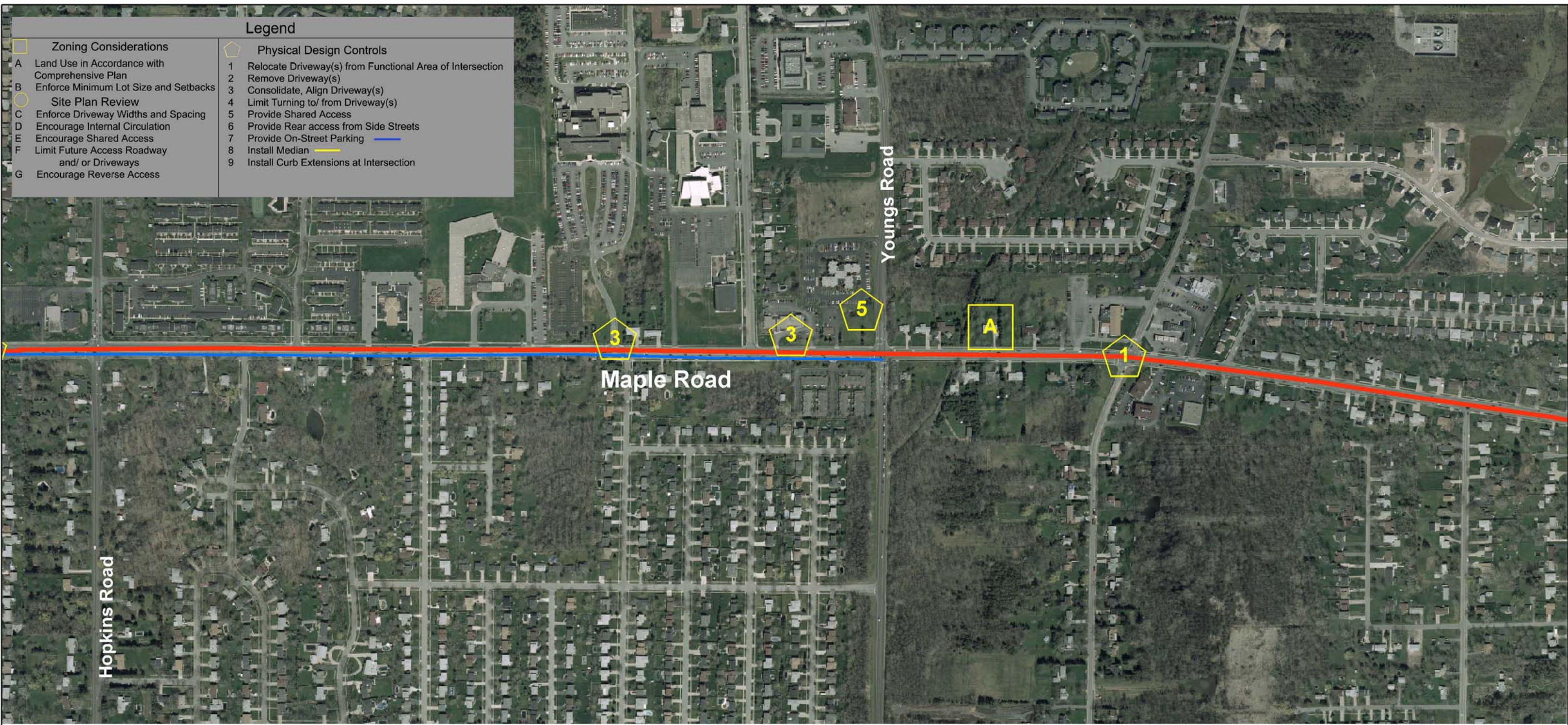
Consideration of driveway consolidation is needed within the functional area of intersections. (East of Bailey Avenue)




Restricted turning movements to/from directional driveways limit conflict points along Maple Road. (West of Bailey Avenue)




Legend	
	<b>Zoning Considerations</b>
A	Land Use in Accordance with Comprehensive Plan
B	Enforce Minimum Lot Size and Setbacks
	<b>Site Plan Review</b>
C	Enforce Driveway Widths and Spacing
D	Encourage Internal Circulation
E	Encourage Shared Access
F	Limit Future Access Roadway and/ or Driveways
G	Encourage Reverse Access
	<b>Physical Design Controls</b>
1	Relocate Driveway(s) from Functional Area of Intersection
2	Remove Driveway(s)
3	Consolidate, Align Driveway(s)
4	Limit Turning to/ from Driveway(s)
5	Provide Shared Access
6	Provide Rear access from Side Streets
7	Provide On-Street Parking 
8	Install Median 
9	Install Curb Extensions at Intersection



N



0 150 300 Feet



**CPA**  
CLARK PATTERSON ASSOCIATES

Design Professionals  
www.clarkpatterson.com




# Access Management Strategies For Major Corridors

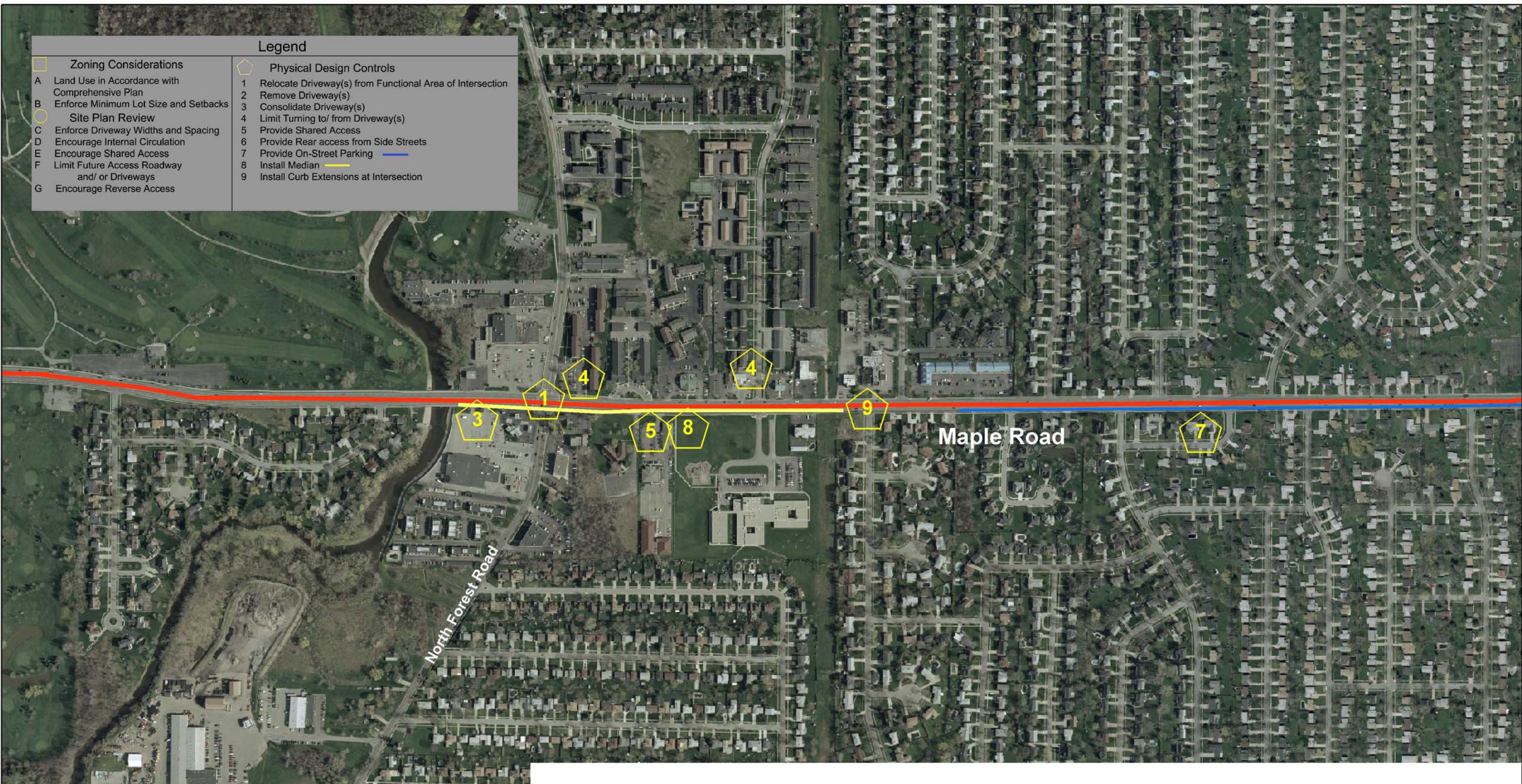
Town of Amherst  
Erie County

Maple Road  
Sheet 4 of 5

September 2004



Legend	
	<b>Zoning Considerations</b>
A	Land Use in Accordance with Comprehensive Plan
B	Enforce Minimum Lot Size and Setbacks
	<b>Site Plan Review</b>
C	Enforce Driveway Widths and Spacing
D	Encourage Internal Circulation
E	Encourage Shared Access
F	Limit Future Access Roadway and/ or Driveways
G	Encourage Reverse Access
	<b>Physical Design Controls</b>
1	Relocate Driveway(s) from Functional Area of Intersection
2	Remove Driveway(s)
3	Consolidate Driveway(s)
4	Limit Turning to/ from Driveway(s)
5	Provide Shared Access
6	Provide Rear access from Side Streets
7	Provide On-Street Parking
8	Install Median
9	Install Curb Extensions at Intersection



# Access Management Strategies For Major Corridors

Town of Amherst  
Erie County

Maple Road  
Sheet 3 of 5

September 2004

N  
0 100 200 300 400  
Feet

CLARK PATTERSON ASSOCIATES  
Design Professionals  
www.clarkpatterson.com



### Legend

- Zoning Considerations
- A Land Use in Accordance with Comprehensive Plan
- B Enforce Minimum Lot Size and Setbacks
- Site Plan Review
- C Enforce Driveway Widths and Spacing
- D Encourage Internal Circulation
- E Encourage Shared Access
- F Limit Future Access Roadway and/ or Driveways
- G Encourage Reverse Access

- Physical Design Controls
- 1 Relocate Driveway(s) from Functional Area of Intersection
- 2 Remove Driveway(s)
- 3 Consolidate Driveway(s)
- 4 Limit Turning to/ from Driveway(s)
- 5 Provide Shared Access
- 6 Provide Rear access from Side Streets
- 7 Provide On-Street Parking —
- 8 Install Median —
- 9 Install Curb Extensions at Intersection



Maple Road

Millersport Highway

I-290



Design Professionals  
www.clarkpatterson.com

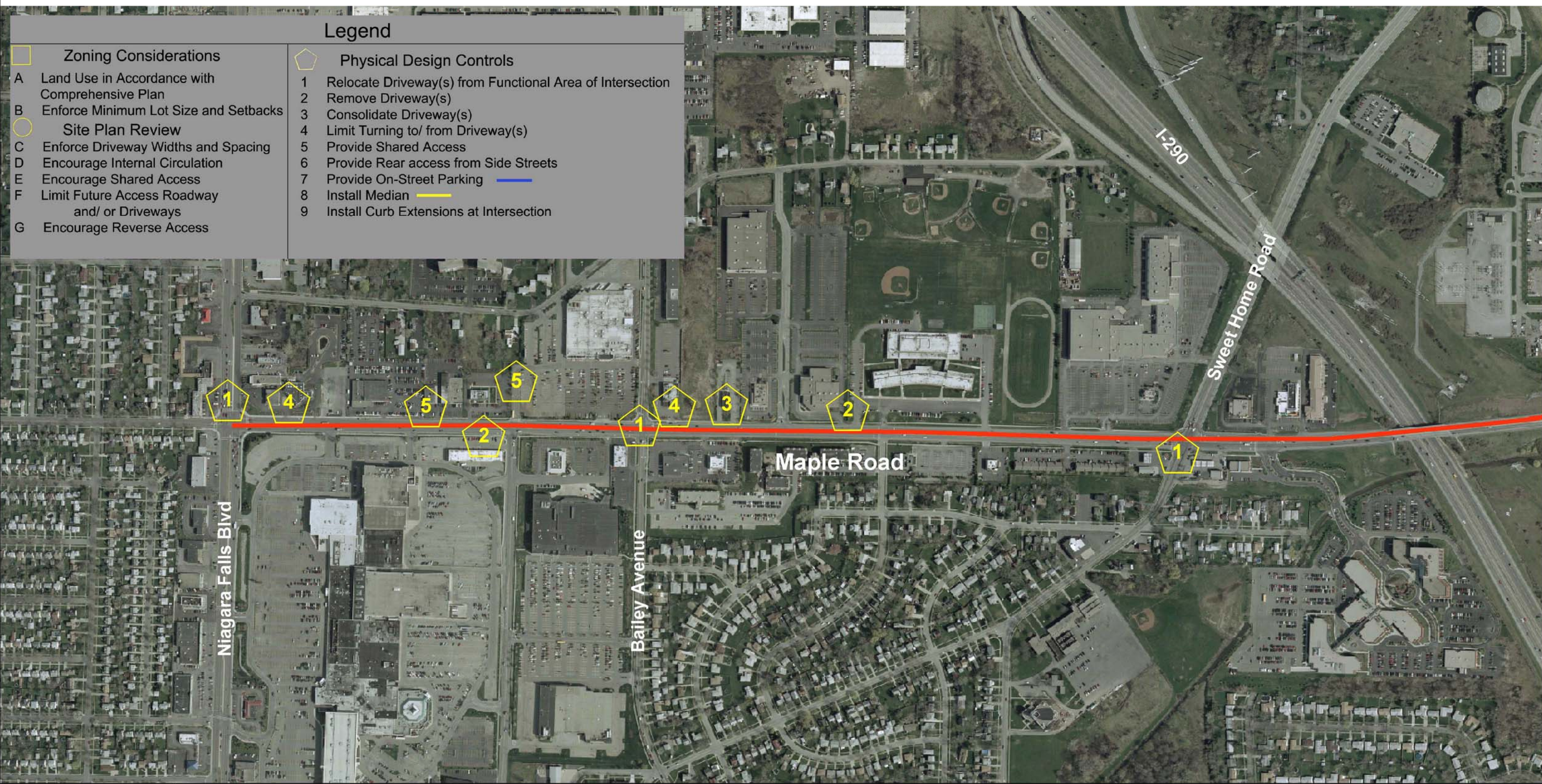
# Access Management Strategies For Major Corridors

Town of Amherst  
Erie County

Maple Road  
Sheet 2 of 5

September 2004





**Legend**

- Zoning Considerations
- A Land Use in Accordance with Comprehensive Plan
- B Enforce Minimum Lot Size and Setbacks
- Site Plan Review
- C Enforce Driveway Widths and Spacing
- D Encourage Internal Circulation
- E Encourage Shared Access
- F Limit Future Access Roadway and/ or Driveways
- G Encourage Reverse Access

- ⬡ Physical Design Controls
- 1 Relocate Driveway(s) from Functional Area of Intersection
- 2 Remove Driveway(s)
- 3 Consolidate Driveway(s)
- 4 Limit Turning to/ from Driveway(s)
- 5 Provide Shared Access
- 6 Provide Rear access from Side Streets
- 7 Provide On-Street Parking
- 8 Install Median
- 9 Install Curb Extensions at Intersection

# Access Management Strategies For Major Corridors

Town of Amherst  
Erie County

Maple Road  
Sheet 1 of 5

September 2004

N

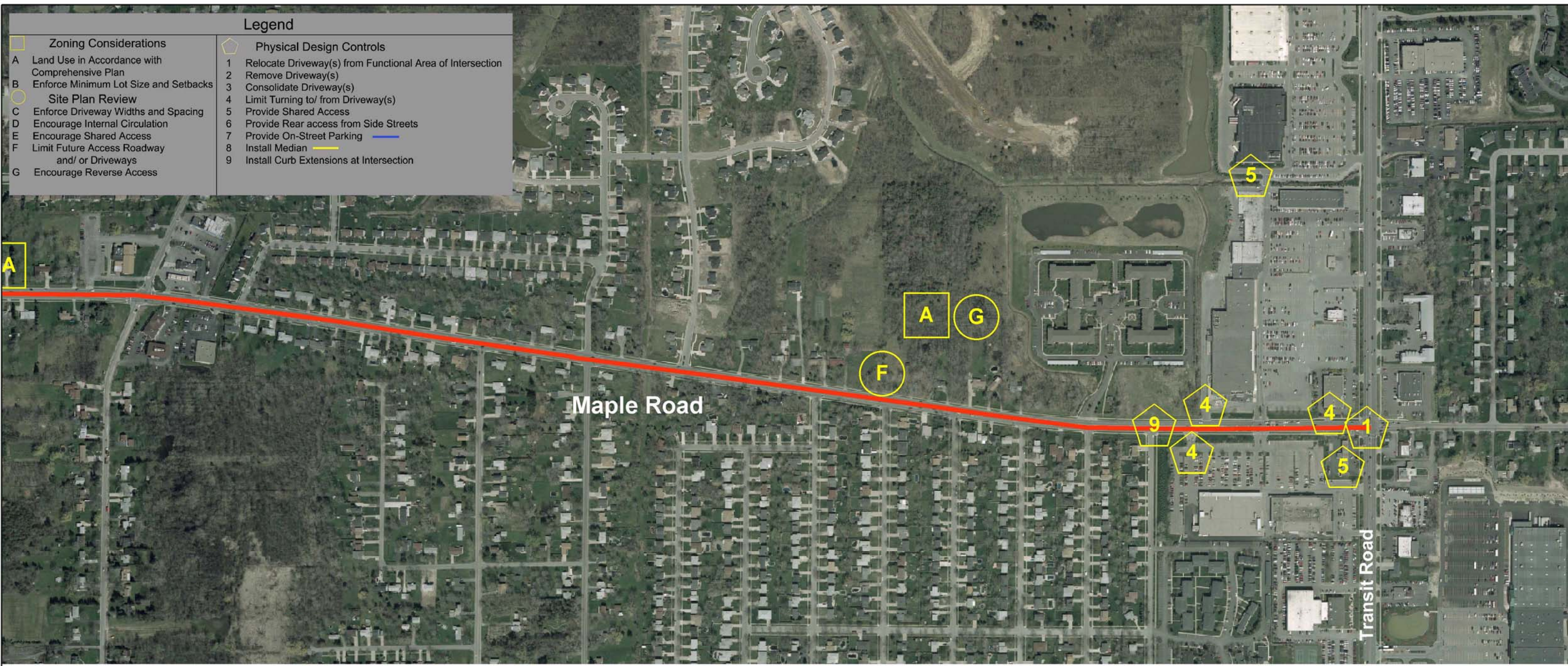
0 100 200 300 Feet

**CPA**  
CLARK PATTERSON ASSOCIATES

Design Professionals  
www.clarkpatterson.com



Legend	
<b>Zoning Considerations</b>	<b>Physical Design Controls</b>
A Land Use in Accordance with Comprehensive Plan	1 Relocate Driveway(s) from Functional Area of Intersection
B Enforce Minimum Lot Size and Setbacks	2 Remove Driveway(s)
<b>Site Plan Review</b>	3 Consolidate Driveway(s)
C Enforce Driveway Widths and Spacing	4 Limit Turning to/ from Driveway(s)
D Encourage Internal Circulation	5 Provide Shared Access
E Encourage Shared Access	6 Provide Rear access from Side Streets
F Limit Future Access Roadway and/ or Driveways	7 Provide On-Street Parking
G Encourage Reverse Access	8 Install Median
	9 Install Curb Extensions at Intersection



# Access Management Strategies For Major Corridors

Town of Amherst  
Erie County

Maple Road  
Sheet 5 of 5

September 2004

N

0 195 390 Feet

**CPA**  
CLARK PATTERSON ASSOCIATES

Design Professionals  
www.clarkpatterson.com