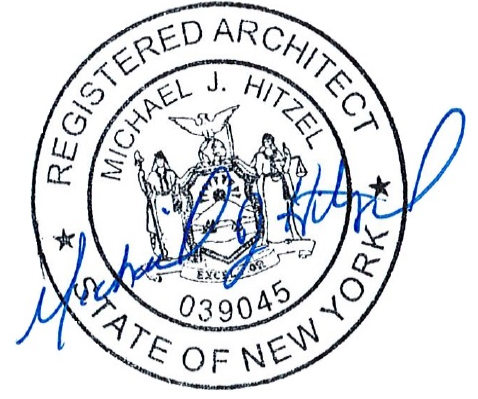


TOWN OF AMHERST



TOWN OF AMHERST
ENGINEERING DEPARTMENT
5583 MAIN STREET
WILLAMSVILLE, NY 14221
PHONE: (716) 631-7051



ERIE COUNTY



NEW YORK

AUDUBON GOLF COURSE DRIVING RANGE NETTING

Town Supervisor
Brian J. Kulpa, RA

Town Engineer
Jeffrey S. Burroughs, P.E.

Town Councilmembers
Jacqueline G. Berger
Angela Marinucci
Shawn A. Lavin
Michael Szukala

Supt. of Highways
Steven Floss

Senior Deputy Town Attorney
Samuel Alba

TOWN JOB NO. 2000.085I

DRAWING INDEX

SHEET NO.	DWG. NO.	DESCRIPTION
1	T	TITLE PAGE
2	C-1	OVERALL SITE PLAN
3	C-2	SITE AND LANDSCAPE PLAN- EXISTING CONDITIONS
4	C-3	SITE PLAN - PROPOSED WORK
5	C-4	EXISTING GRADING AND DETAILS

SITE PLAN APPROVAL
09/05/2024

AUDUBON GOLF COURSE DRIVING RANGE NETTING

TITLE SHEET

FIELD CREW:

DRAWN BY: MJH

JOB NO. 2000.085I

CHECKED BY: BJA

CHECKED BY:

SCALE: AS NOTED

DATE: 09/05/24

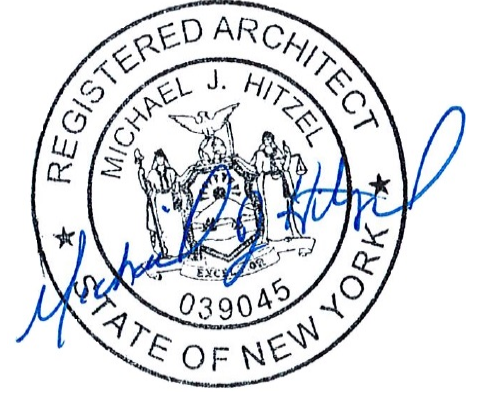
REVISIONS

BY	DATE

DWG. NO.

T

SHT. NO. 1 OF 5



TOWN OF AMHERST
 ENGINEERING DEPARTMENT
 5583 MAIN STREET
 WILLAMSVILLE, NY 14221
 PHONE: (716) 631-7051

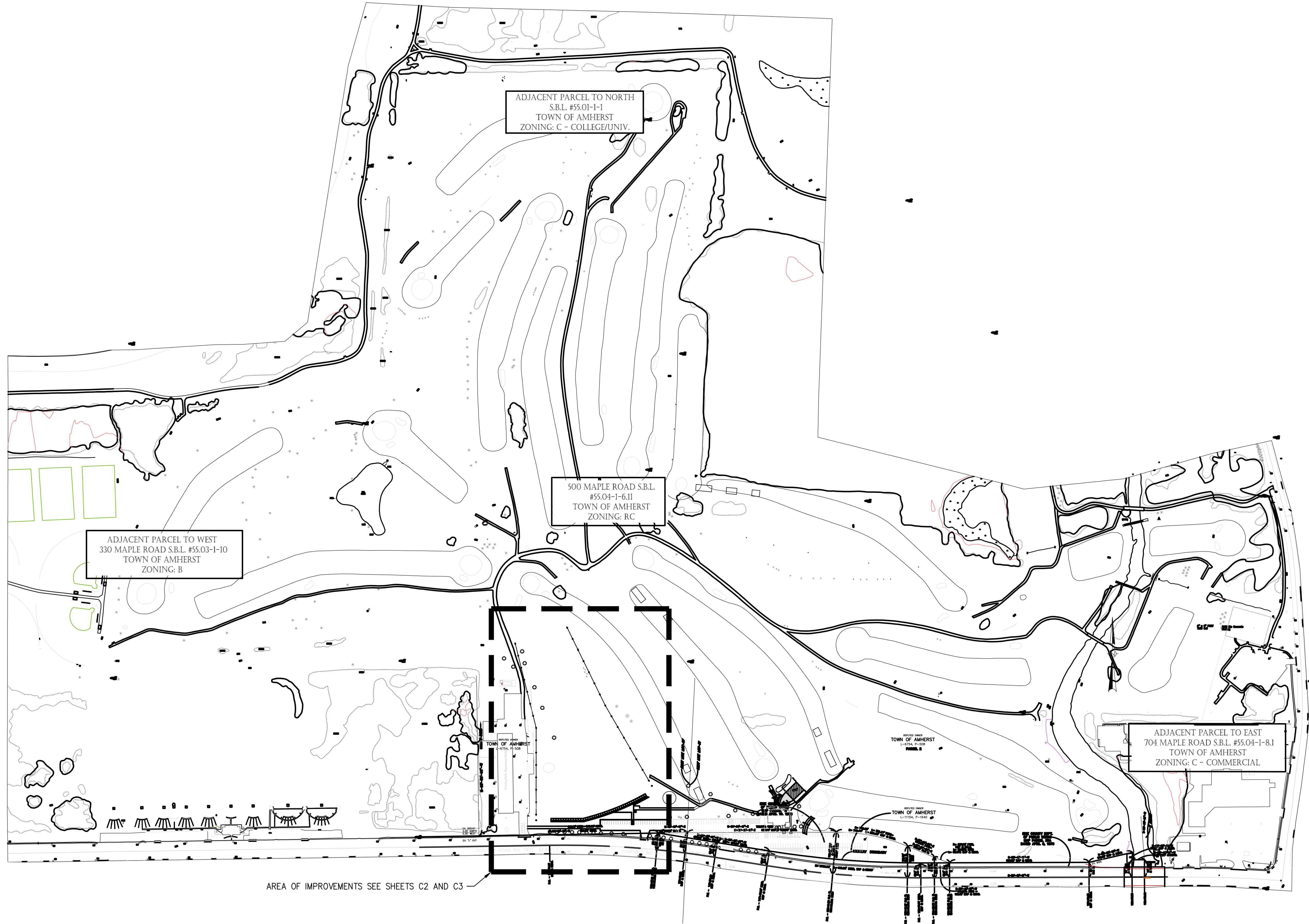


AUDUBON GOLF COURSE DRIVING RANGE NETTING
 OVERALL SITE PLAN

FIELD CREW:
 DRAWN BY: MJH
 JOB NO. 2000.0851
 CHECKED BY: BJA
 CHECKED BY:
 SCALE: AS NOTED
 DATE: 09/05/24

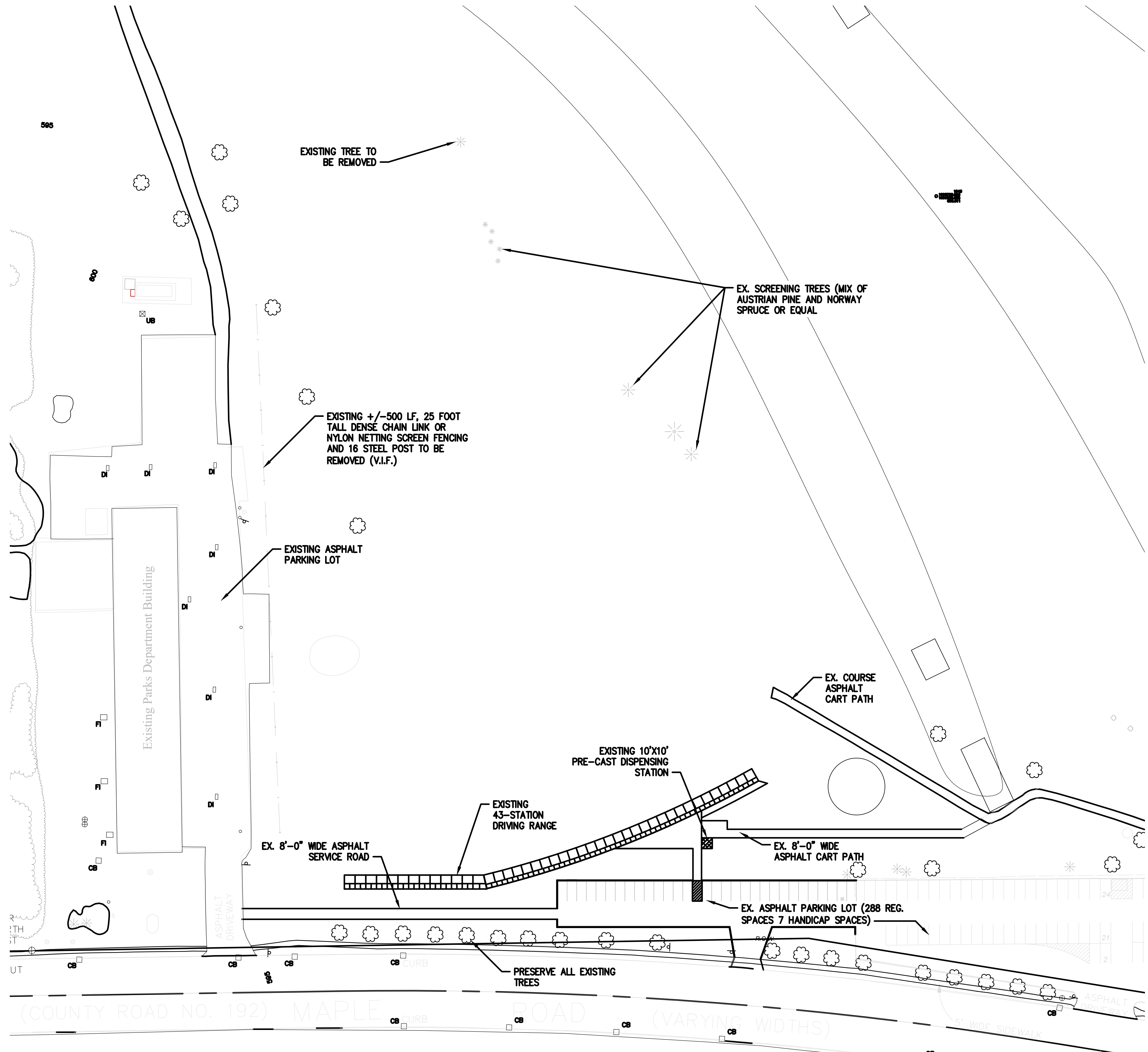
REVISIONS	
BY	DATE

DWG. NO.
C1
 SHT. NO. 2 OF 5



AREA OF IMPROVEMENTS SEE SHEETS C2 AND C3

0 200' 400'
 SCALE IN FEET



NOTES:

1. FOR PERMITTING PURPOSES ONLY.
2. SITE DOES NOT CONTAIN ANY STATE OF FEDERAL WETLANDS AND IS NOT LOCATED IN A FEMA FLOODPLAIN OR FLOODWAY.

ZONING DISTRICTS

RC - RECREATION CONSERVATION

LEGEND

- EXISTING CONIFEROUS TREES (MIX OF AUSTRIAN PINE AND NORWAY SPRUCE OR EQUAL)
- EXISTING DECIDUOUS TREES
- EXISTING SHRUBS/BUSH

NOTE: ALL EXISTING LANDSCAPE SHALL REMAIN AS IS UNLESS NOTED OTHERWISE. PROJECT WILL NOT INCLUDE ANY NEW LANDSCAPING AS PART OF THE PROJECT



TOWN OF AMHERST
ENGINEERING DEPARTMENT
 5583 MAIN STREET
 WILLAMSVILLE, NY 14221
 PHONE: (716) 631-7051

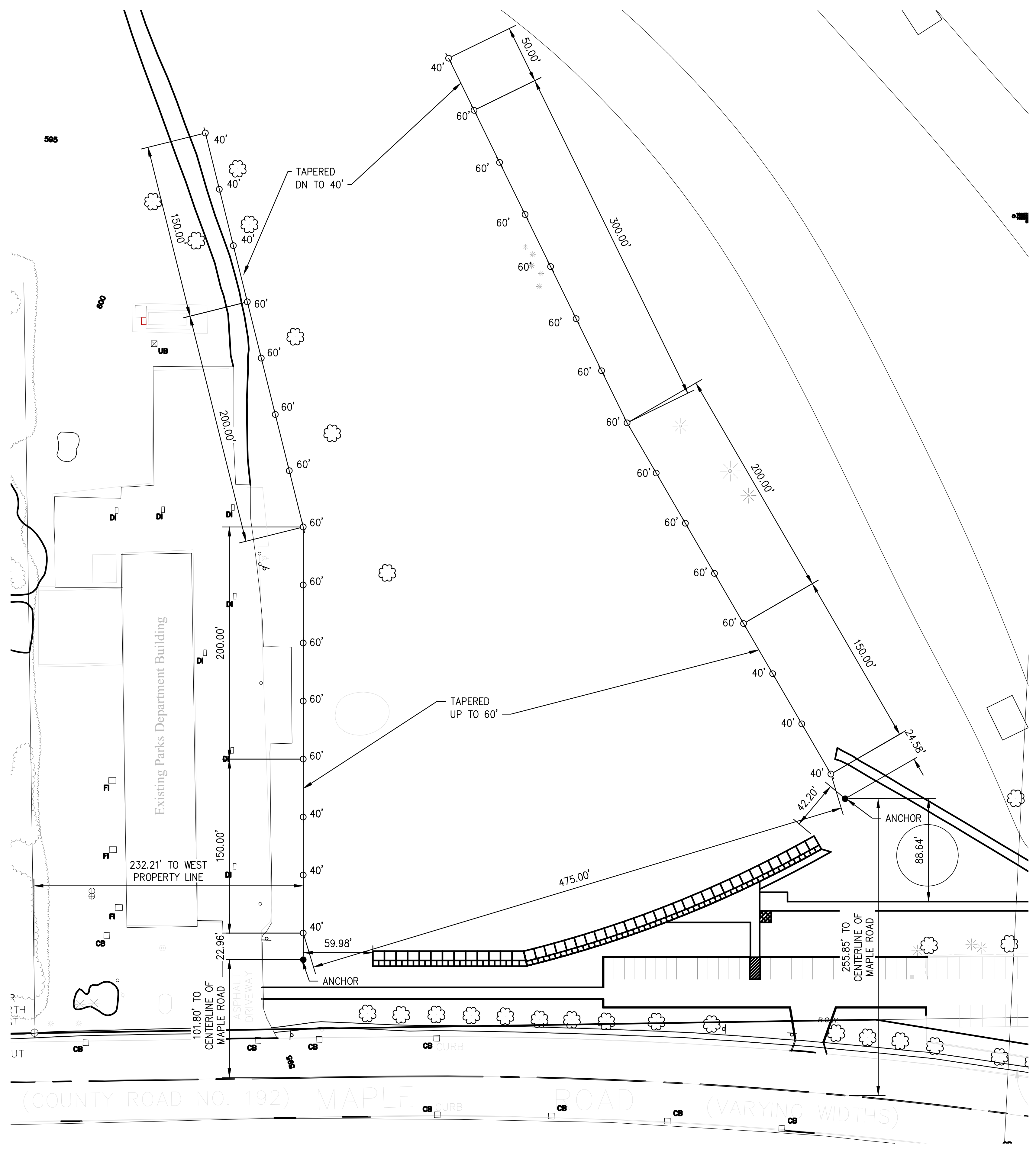


AUDUBON GOLF COURSE DRIVING RANGE NETTING
SITE AND LANDSCAPE PLAN - EXISTING CONDITIONS

FIELD CREW:
 DRAWN BY: MJH
 JOB NO. 2000.0851
 CHECKED BY: BJA
 CHECKED BY:
 SCALE: AS NOTED
 DATE: 09/05/24

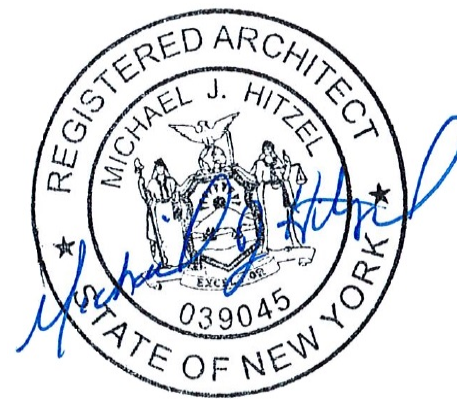
REVISIONS	
BY	DATE

DWG. NO.
C2
 SHT. NO. 3 OF 5



NOTES:

- ALL NEW WOOD POLES ARE SPACED 50'-0" O.C. OR AS SHOWN
- INDICATED POLE HEIGHTS ARE ABOVE FINISH GRADE



TOWN OF AMHERST
 ENGINEERING DEPARTMENT
 5583 MAIN STREET
 WILLAMSVILLE, NY 14221
 PHONE: (716) 631-7051

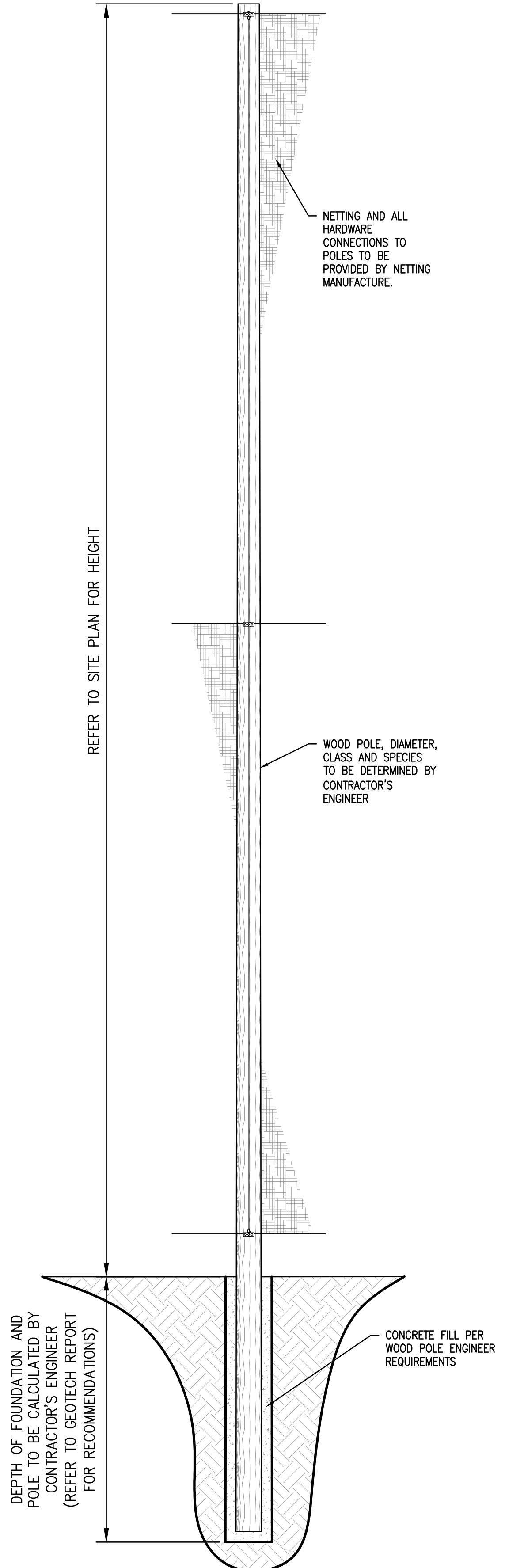
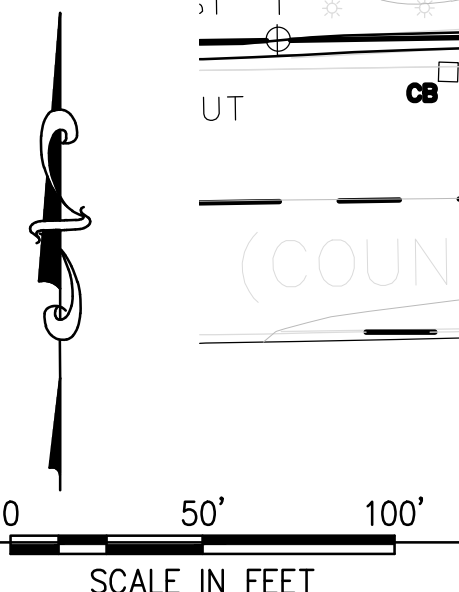
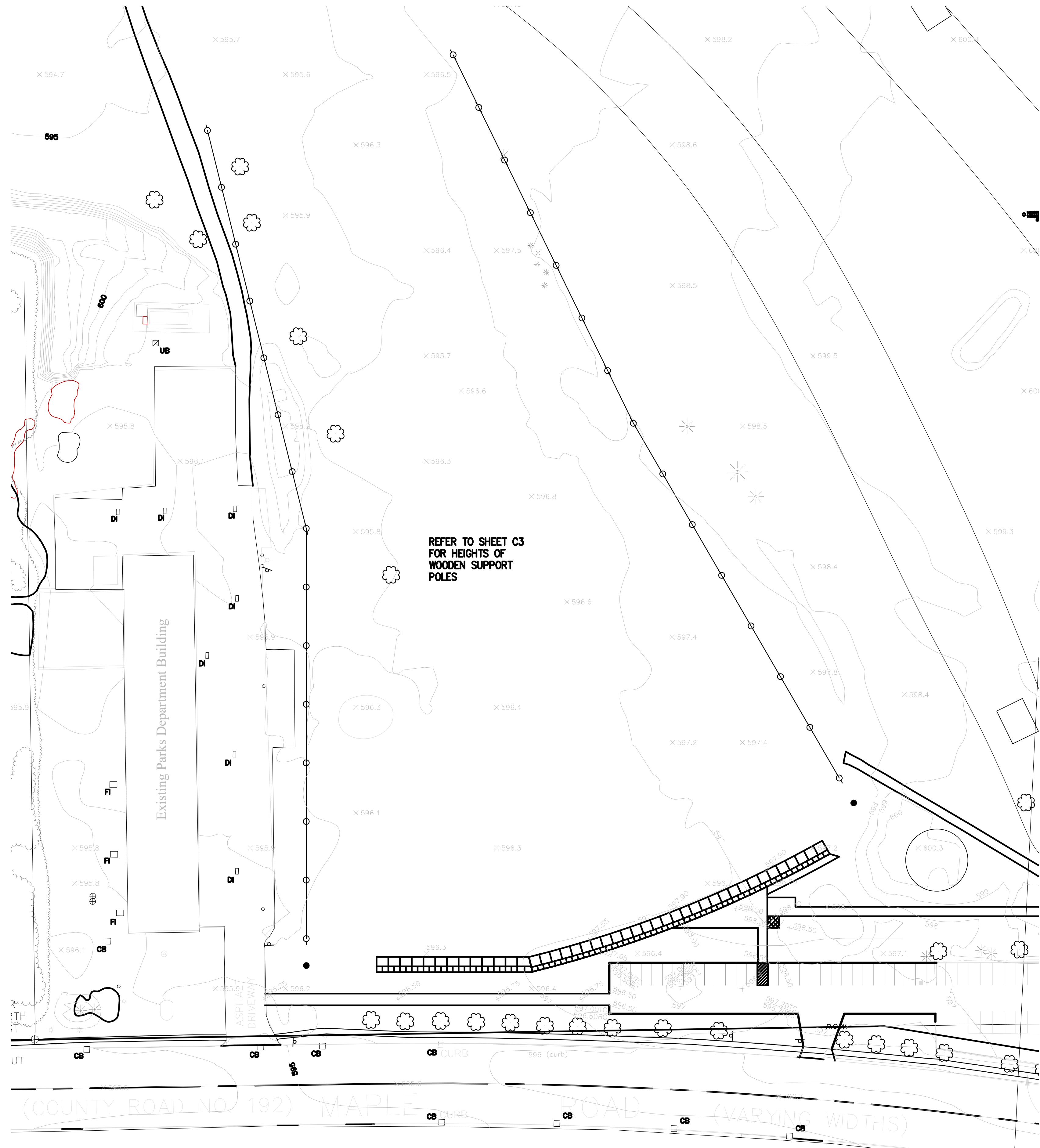


AUDUBON GOLF COURSE DRIVING RANGE NETTING
 SITE PLAN - PROPOSED WORK

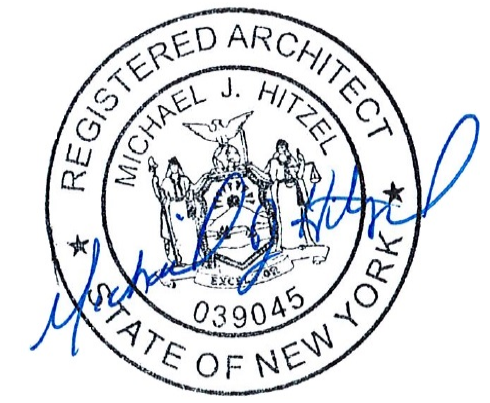
FIELD CREW:
 DRAWN BY: MJH
 JOB NO. 2000.0851
 CHECKED BY: BJA
 CHECKED BY:
 SCALE: AS NOTED
 DATE: 09/05/24

REVISIONS	
BY	DATE

DWG. NO.
C3
 SHT. NO. 4 OF 5



1 TYP. WOOD NET SUPPORT POLE
 02 1/4" = 1'-0"



TOWN OF AMHERST
 ENGINEERING DEPARTMENT
 5583 MAIN STREET
 WILLAMSVILLE, NY 14221
 PHONE: (716) 631-7051



AUDUBON GOLF COURSE DRIVING RANGE NETTING
 EXISTING GRADING PLAN AND POLE DETAIL

FIELD CREW:	
DRAWN BY: MJH	
JOB NO. 2000.0851	
CHECKED BY: BJA	
CHECKED BY:	
SCALE: AS NOTED	
DATE: 09/05/04	
REVISIONS	
BY	DATE
DWG. NO.	
C4	
SHT. NO. 5 OF 5	