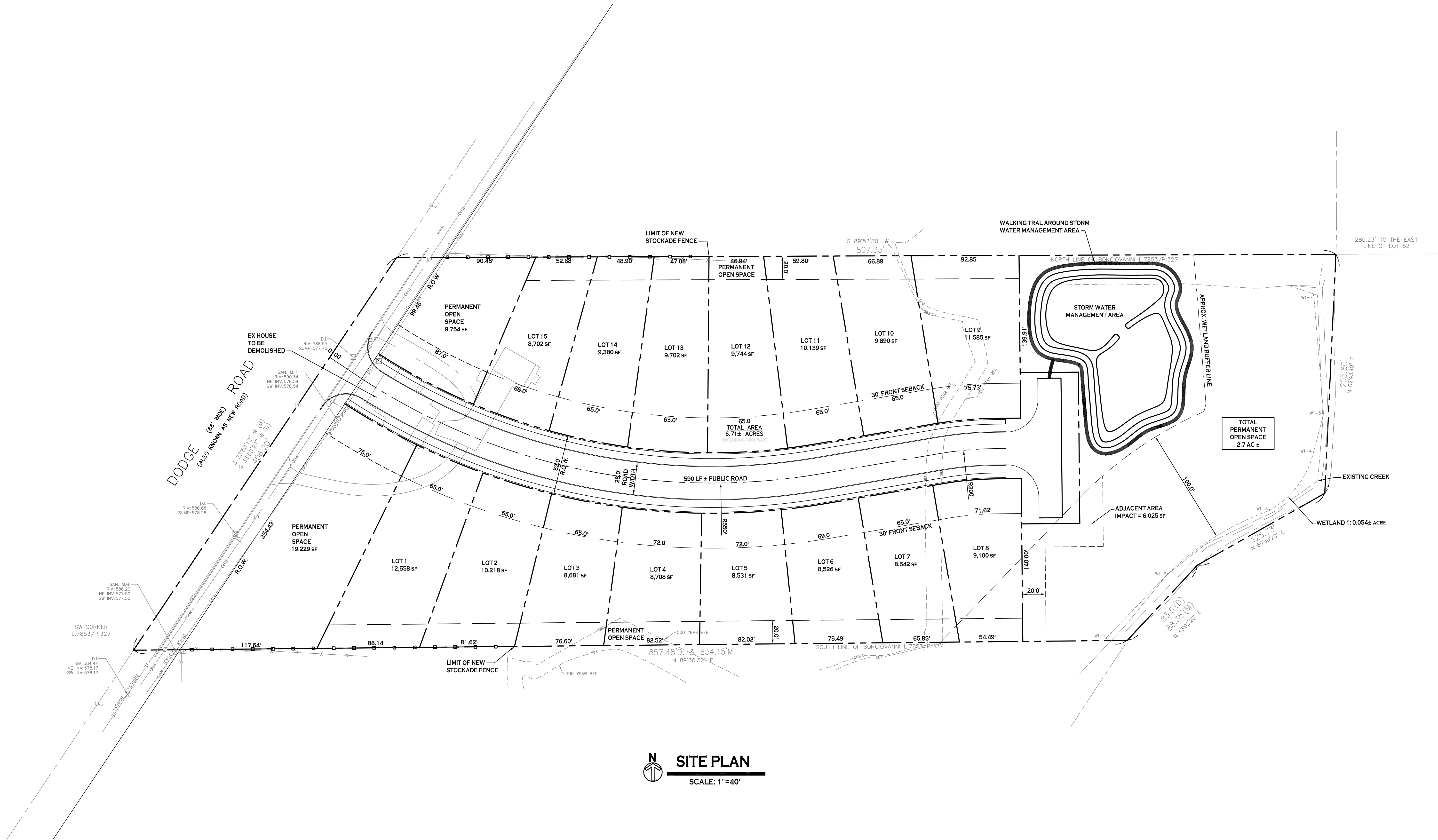


All Rights Reserved. Reuse of these documents without the expressed written permission of CARMINA WOOD DESIGN is prohibited. WARNING: It is a violation of article 145 of the New York State Environmental Conservation Law to alter this drawing. If altered such R.A., P.E. or L.L.S. shall affix his or her seal, signature, the date, the notation "Altered By" and a specific description of the alteration.

© CARMINA WOOD DESIGN



SITE PLAN
SCALE: 1"=40'

SITE DATA (ZONED R-3)	
AREA =	6.7 ACRES ±
MIN. LOT WIDTH =	65 FT INTERIOR LOTS
MIN. LOT WIDTH =	75 FT CORNER LOTS
MIN. LOT AREA =	8,450 SF INTERIOR LOTS
MIN. LOT AREA =	9,750 SF CORNER LOTS
FRONT SETBACK =	30 FT (OFF EDGE OF PVMT)
SIDE SETBACK =	5 FT
REAR SETBACK =	30 FT
MAXIMUM LOT COVERAGE =	35%
MAXIMUM BUILDING HEIGHT =	35 FT
MINIMUM FLOOR AREA =	1,000 SF (1 STORY)
MINIMUM FLOOR AREA =	1,200 SF (2 STORIES)

NOTE: BOUNDARY AND TOPOGRAPHIC INFORMATION PROVIDED BY OTHERS. CARMINA WOOD DESIGN ASSUMES NO RESPONSIBILITY FOR ITS ACCURACY.



REVISIONS:	No.	Description	Date

PRELIMINARY
NOT FOR CONSTRUCTION

DRAWING NAME:
Sketch Plan

Date: 08.14.24
Drawn By: C. Wood
Scale: As Noted

DRAWING NO.
C-100
Project No: 20.247