

Figure 6: Wetland Delineation Map

Town of Amherst Erie County, NY



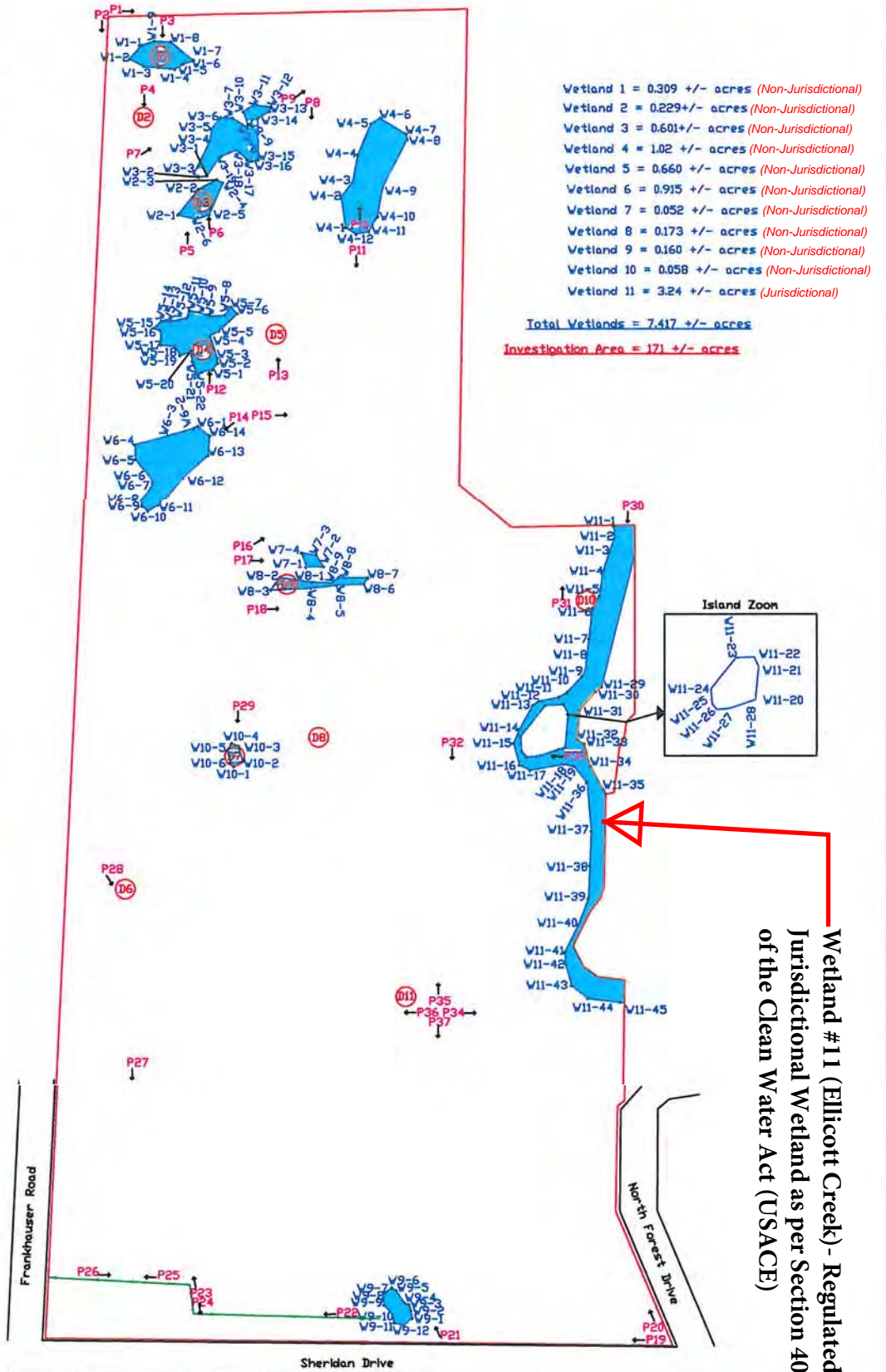
EARTH DIMENSIONS, INC.

EXHIBIT J - WETLAND DELINEATION MAP

Westwood Country Club

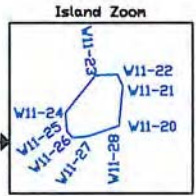
LEGEND

- Limits of Investigation
- Drainages
- Wetland Boundary Flag
- Wetland Area
- Photo Location
- Data Point Location



- Wetland 1 = 0.309 +/- acres (Non-Jurisdictional)
- Wetland 2 = 0.229 +/- acres (Non-Jurisdictional)
- Wetland 3 = 0.601 +/- acres (Non-Jurisdictional)
- Wetland 4 = 1.02 +/- acres (Non-Jurisdictional)
- Wetland 5 = 0.660 +/- acres (Non-Jurisdictional)
- Wetland 6 = 0.915 +/- acres (Non-Jurisdictional)
- Wetland 7 = 0.052 +/- acres (Non-Jurisdictional)
- Wetland 8 = 0.173 +/- acres (Non-Jurisdictional)
- Wetland 9 = 0.160 +/- acres (Non-Jurisdictional)
- Wetland 10 = 0.058 +/- acres (Non-Jurisdictional)
- Wetland 11 = 3.24 +/- acres (Jurisdictional)

Total Wetlands = 7.417 +/- acres
Investigation Area = 171 +/- acres



Wetland # 11 (Ellicott Creek) - Regulated Jurisdictional Wetland as per Section 404 of the Clean Water Act (USACE)

Scale:
Map Date: September 25, 2012/ ARS for EDI Revised:
Base Map Provided By: Garmin GPSmap 62Sx 4-9 foot accuracy
File Name: Wetland Delineation Map.dwg
EDI Project Code: W1109b